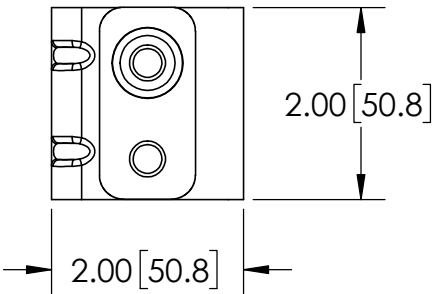
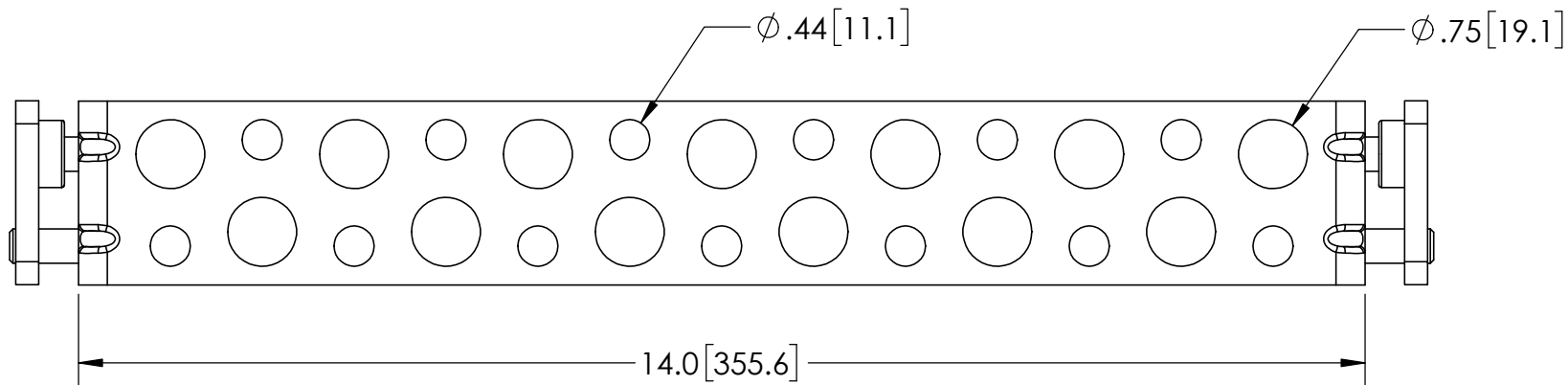
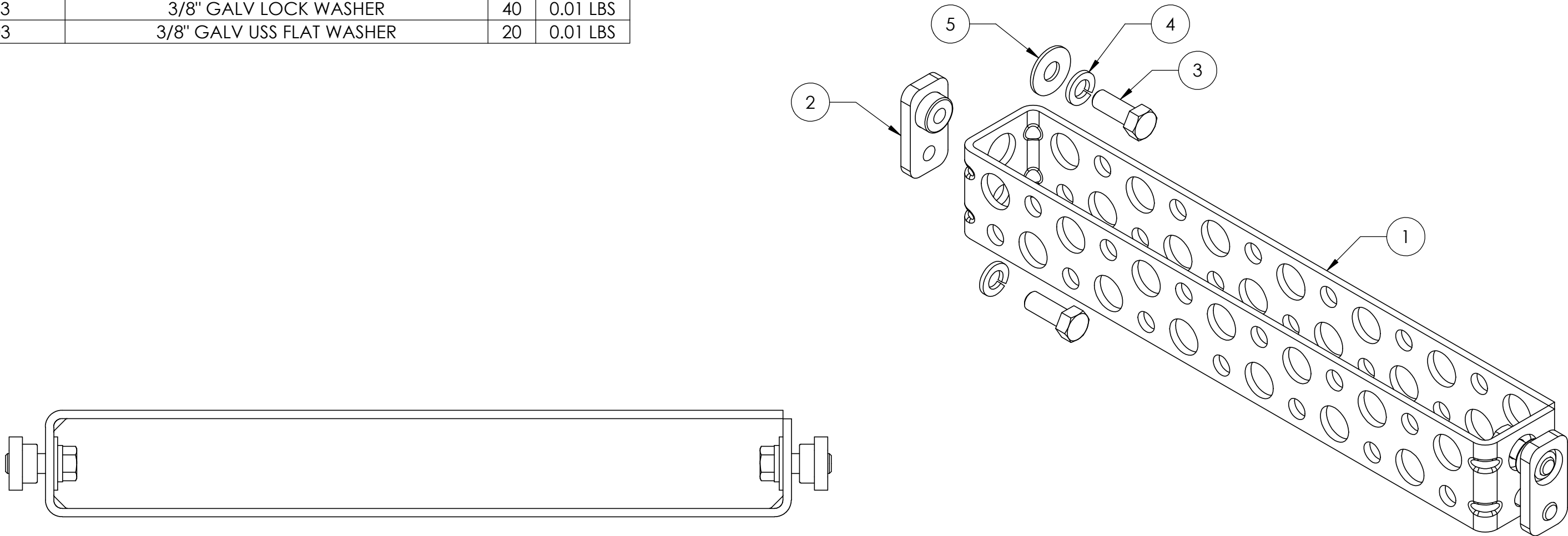


| ITEM | PART NO.    | DESCRIPTION                               | QTY. | WEIGHT   |
|------|-------------|---|------|----------|
| 1    | PBABEB14.01 | PIM BLOCKER™ ALPHA BRACKET EXTENSION, 14" | 10   | 2.01 LBS |
| 2    | PBABBP.01   | PIM BLOCKER™ ALPHA BRACKET BACKING PLATE  | 20   | 0.14 LBS |
| 3    | GB03105.01  | 3/8-16 UNC X 1" GALV HEX BOLT (GRADE 5)   | 40   | 0.05 LBS |
| 4    | GWL03       | 3/8" GALV LOCK WASHER                     | 40   | 0.01 LBS |
| 5    | GWF03       | 3/8" GALV USS FLAT WASHER                 | 20   | 0.01 LBS |

| REVISIONS |      |                 |     |          |
|-----------|------|-----------------|-----|----------|
| REV.      | ZONE | DESCRIPTION     | BY  | DATE     |
| A         |      | INITIAL RELEASE | ACG | 10/04/21 |



- NOTES:
- 1. ALL METRIC DIMENSIONS ARE IN BRACKETS.
  - 2. STAMP PART IDENTIFICATION NUMBER.
  - 3. WELDING WORKMANSHIP PER AWS D1.1, TABLE 6.1.

|   |                       |                                     |   |
|---|-----------------------|-------------------------------------|---|
| These drawings and specifications are proprietary property and may be used only for the specific purpose authorized in writing. | DRAWN BY:<br>ACG      | SHEET:<br>1 of 1                    | PART NUMBER:<br><b>FM-PBAB14K10</b>                                   |
|   | CHECKED BY:<br>MKV    | SCALE:<br>NTS                       | DESCRIPTION:<br>PIM BLOCKER™ ALPHA BRACKET EXTENSION KIT OF (10), 14" |
|   | DATE:<br>10/04/21     | MATERIAL:<br>ASTM A1011/A1018 Gr.36 | DRAWING TYPE:<br>ASSEMBLY DRAWING                                     |
|   | REVISION:<br><b>A</b> | FINISH:<br>ASTM A123                |   |
| DO NOT SCALE THIS PRINT   |                       | WEIGHT:<br>25.60 LBS                |   |